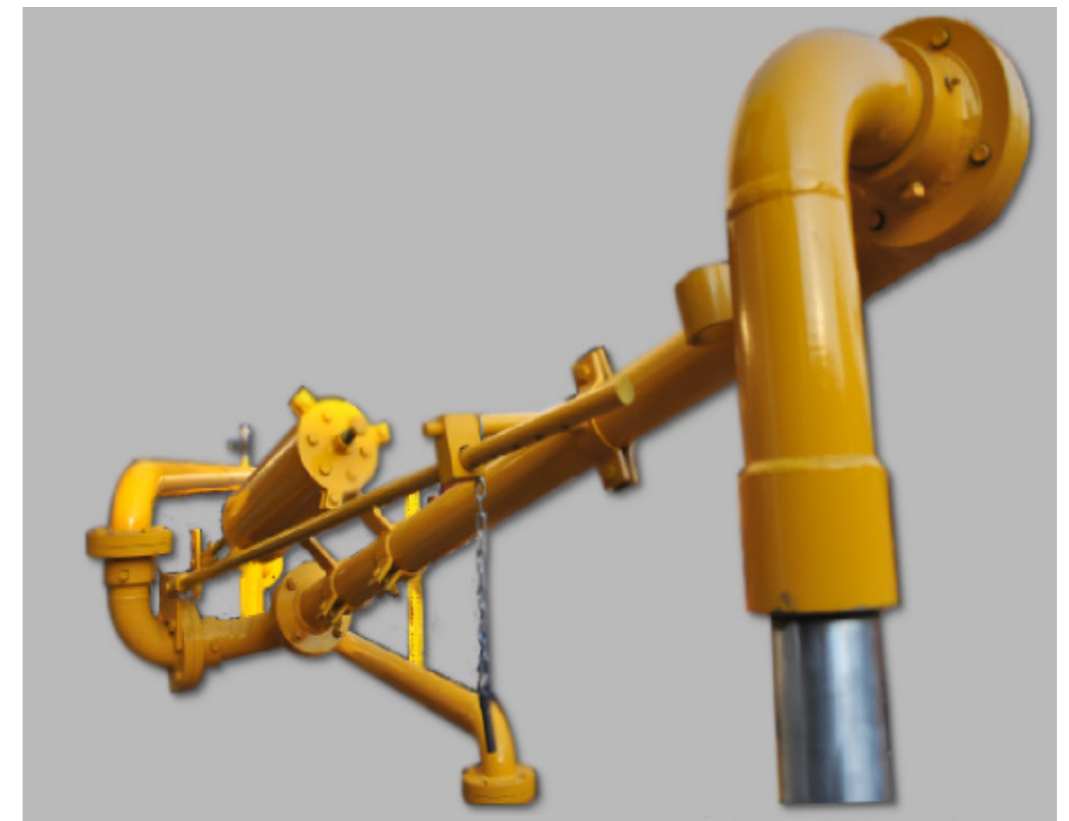


Loading Arms

Steelfab Engineering Pvt. Ltd.
AN ISO 9001:2008 REGISTERED

Address: Plot No. 37, Swami Vivekanand Co-op. Indl. Estate,
Handewadi Road, Satav Nagar, Hadapsar,
Pune - 411 028. Maharashtra, India.

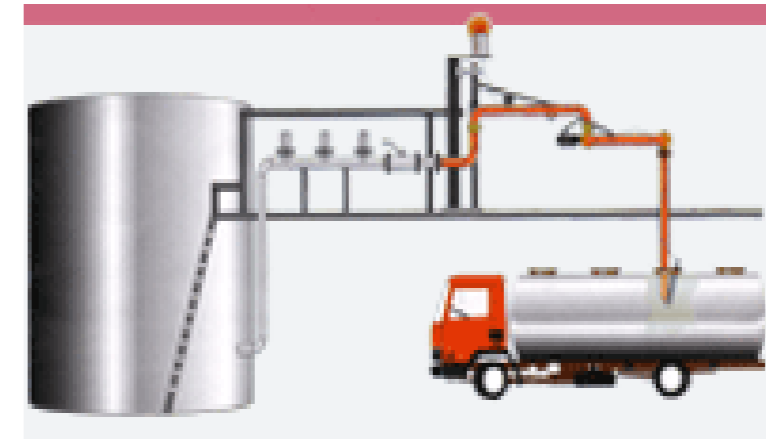
Phone: +91 - 20 - 26970831
Fax: +91 - 20 - 26970833
Email: marketing@steelfabeng.com
Website: www.steelfabeng.com



Application:

These are well suited for transferring petroleum products, asphalt, LPG, Ammonia, solvents, acids, alkalines, hazardous corrosive liquids, mild & edible oils etc. This type of loading arm is especially designed to load oil products. It is suitable for the top loading of road or rail tankers using the manhole. The loading arm has a long reach and is suitable for application where the manhole cannot be accurately positioned.

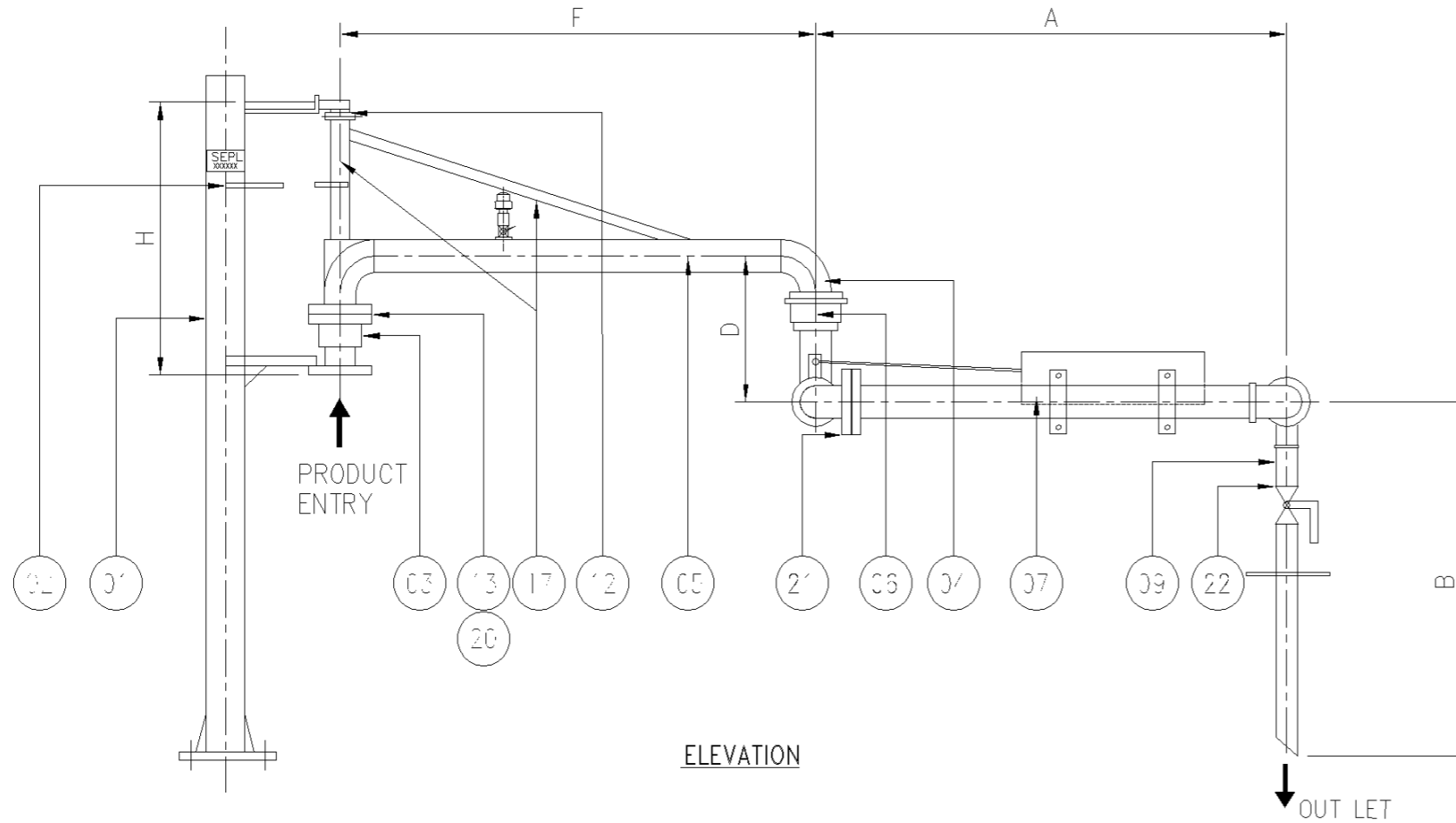
1. Oil Terminals / Depots.
2. Tank farms.
3. Petrochemical / chemical complexes.
4. Refineries.
5. Edible oil plants.
6. Fertilizer plants.
7. Milk dairies and many others.



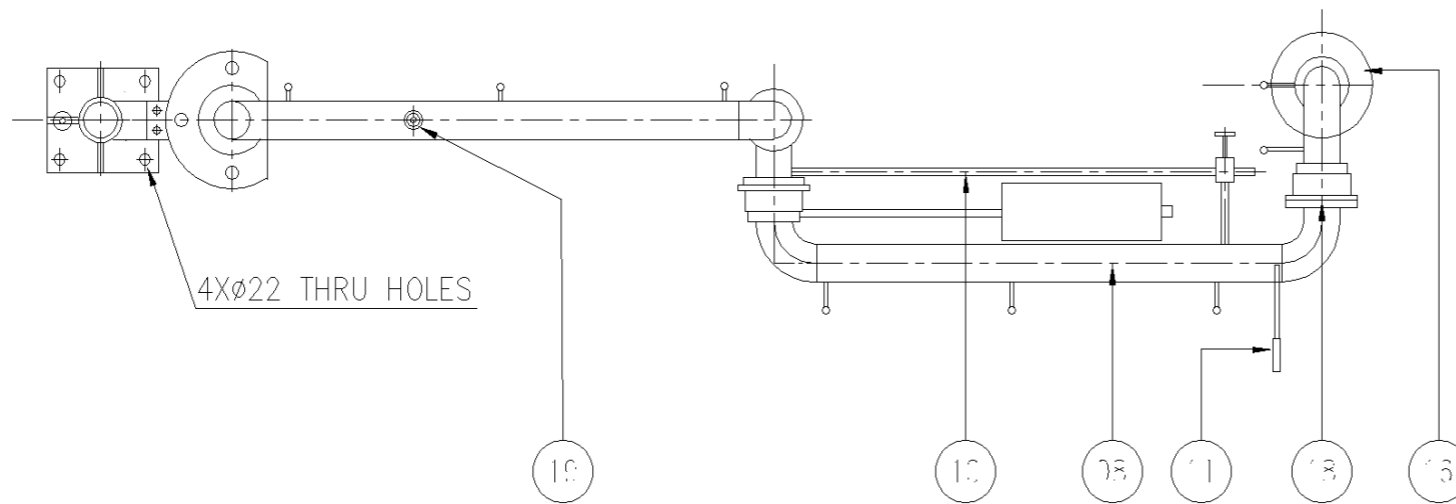
ACCESSORIES

- a) Over spill sensor.
- b) Position sensor.
- c) Junction box.
- d) Grounding unit.
- e) Hooter.
- f) Annunciator

Technical Data



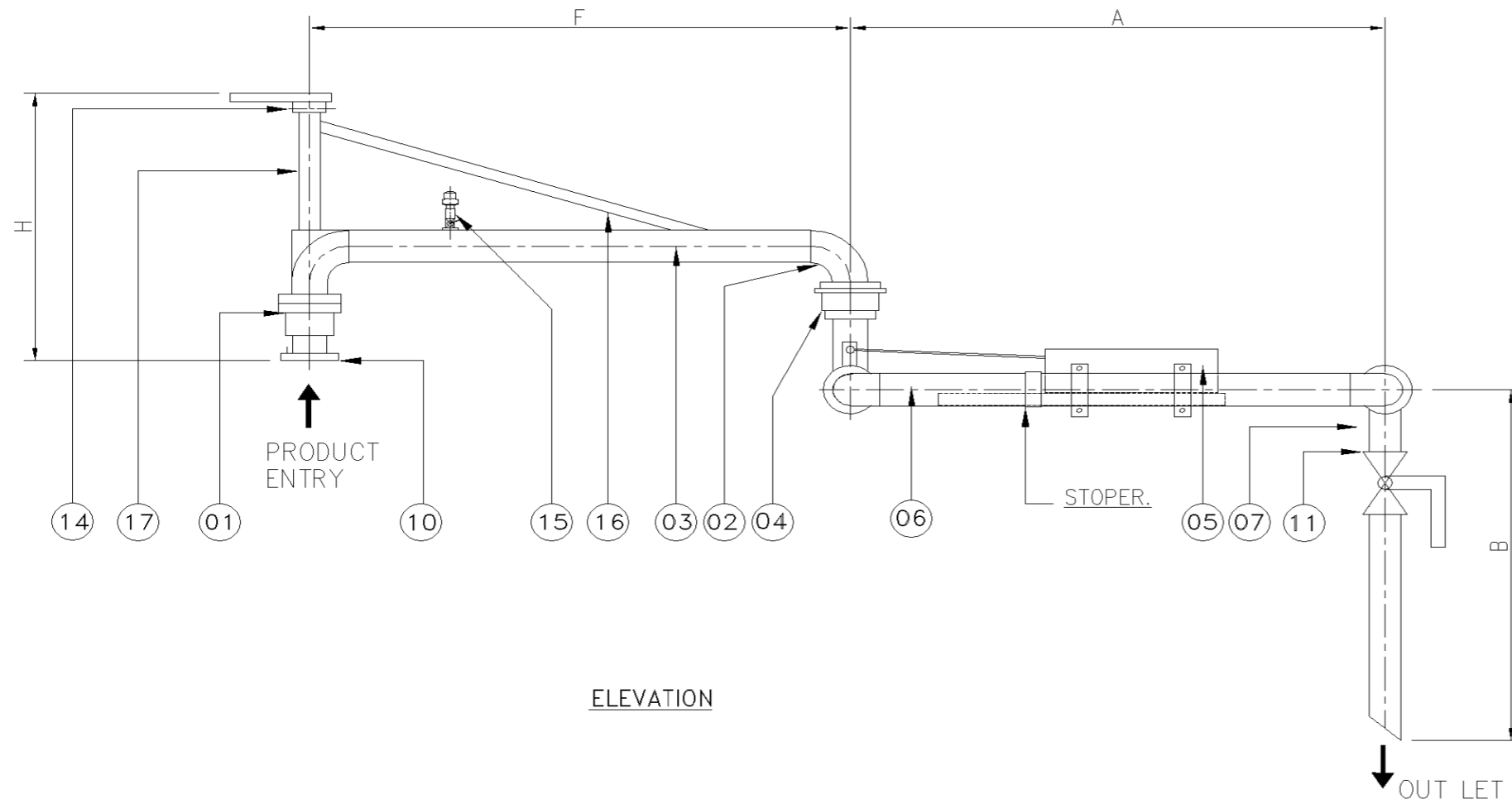
ELEVATION



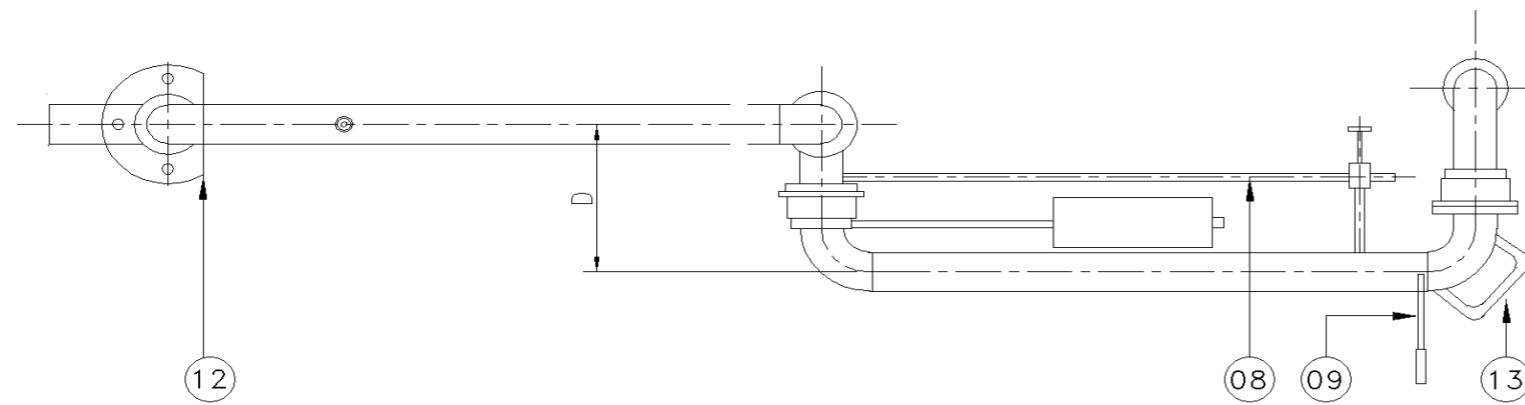
PLAN

- 1 STAND POST ASSLY.
- 2 LOCK FOR PARKING
- 3 SWIVEL JOINT FLANGED
- 4 ELBOW
- 5 INBOARD ASSLY.
- 6 SWIVEL JOINT (SPLIT TYPE)
- 7 SPRING BOX ASSLY.
- 8 OUT BOARD ASSLY.
- 9 DROP PIPE ASSLY.
- 10 LOCKING ARRANGEMENT FOR FILLING-IN POSITION
- 11 HOOK HANDLE
- 12 BEARING BLOCK
- 13 FLANGE
- 14 STUD
- 15 NUT
- 16 PLATE
- 17 SUPPORT PIPE
- 18 SWIVEL JOINT (AL)
- 19 VACCUM BREAKER
- 20 GASKET
- 21 FLANGE
- 22 BALL VALVE

Technical Data with dimensions



ELEVATION



PLAN

- 1 SWIVEL JOINT FLANGED
- 2 ELBOW
- 3 INBOARD ASSLY.
- 4 SWIVEL JOINT (SPLIT TYPE B/W)
- 5 SPRING BOX ASSLY.
- 6 OUT BOARD ASSLY
- 7 DROP PIPE ASSLY.
- 8 LOCKING ARRANGEMENT FOR FILLING-IN POSITION
- 9 HOOK HANDLE
- 10 FLANGE
- 11 BALL VALVE
- 12 STOPPER PLATE
- 13 HANDLE
- 14 BEARING BLOCK
- 15 VACCUM BRACKER
- 16 SUPPORT PIPE
- 17 SUPPORT PIPE

TECHNICAL DATA:—

DN (mm)	A* (mm)	B* (mm)	F* (mm)	H* (mm)	D (mm)	BALANCING METHODE
50	1800	1000	1800	900	~290	spring box / Dead weight
80	2000	1000	1800	900	~385	
100	2000	1000	1800	900	~500	

Note : Above dimensions are standard, Alternative dimensions available on request.

Product entry could be from top, side or bottom, drawing change accordingly

Materials of product carrying components



Loding Arm up to the Handle	Carbon steel / SS
Valve	STD
After Handle (Swivel joint & Drop tupe)	Aluminium/ CS/ SS
Drop pipe	Aluminium/ CS/ SS
Swivel joint seal	Viton
Design pressure	Max. 15 bar as per customer requirement
Design temperature	-10°C – to +50° C as per customer requirement